

# GEARHEAD

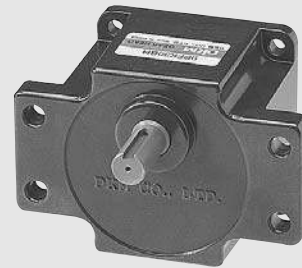
GB TYPE



PB TYPE



PF TYPE



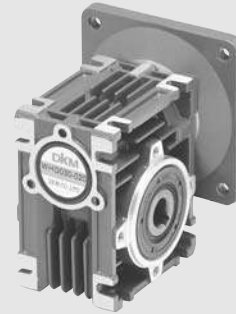
HB TYPE



WD TYPE



WHD TYPE



## INDEX

GEARHEAD FEATURES

196

PARALLEL GEARHEAD

197

WORM GEARHEAD

204

■ Feature

Pinion type Motor has the exclusive Gearhead which its mounting is easy.

■ Introduction of Model

TYPE		MOTOR	MODEL	GEAR RATIO																												
				2	3	3.6	5	6	7.5	9	10	12.5	15	18	20	25	30	36	40	50	60	75	90	100	120	150	180	250	300	360		
PARALLEL TYPE	G TYPE	6W, 10W	7GBD□BMH	x	●	●	●	●	●	●	x	●	●	●	x	●	●	●	●	●	●	●	●	●	●	●	●	●	x	x	x	
		15W, 25W	8GBK□BMH	x	●	●	●	●	●	●	x	●	●	●	x	●	●	●	●	●	●	●	●	●	●	●	●	●	●	●	●	●
		40W	9GBK□BMH	●	●	●	●	●	●	●	●	●	●	x	●	●	●	●	●	●	●	●	●	●	●	●	●	●	x	x	x	
	P TYPE	60W ~ 200W	9PBK□BH	●	●	●	●	●	●	●	x	●	●	●	●	●	●	●	●	●	●	●	●	●	●	●	●	●	x	x	x	
			9PFK□BH	●	●	●	●	●	●	●	x	●	●	●	●	●	●	●	●	●	●	●	●	●	●	●	●	●	x	x	x	
	H TYPE	90W ~ 200W	9HBK□BH	x	●	●	x	●	x	●	x	●	●	●	x	●	●	●	x	●	●	●	●	●	●	●	●	●	x	x	x	
WORM TYPE	SOLID	25W ~ 60W	8/9WD□BL	x	x	x	x	x	x	x	●	●(12)	●	●	x	●	●	●	x	●	●	x	x	x	x	x	x	x	x	x		
			8/9WD□BR	x	x	x	x	x	x	x	●	●(12)	●	●	x	●	●	●	x	●	●	x	x	x	x	x	x	x	x	x	x	
	HOLLOW	60W ~ 200W	9WHD□	x	x	x	x	x	●	x	●	x	●	x	●	●	●	x	●	●	x	x	x	x	x	x	x	x	x	x		

- Enter the gear ratio in the box (□) within the gearhead model name.
- If more slow speed is needed than above value, use inter decimal gearhead with a gear ratio of 10:1 between gearhead and motor.  
(Model name : 8XD10BMH, 9XD10BMH)

PARALLEL GEARHEAD

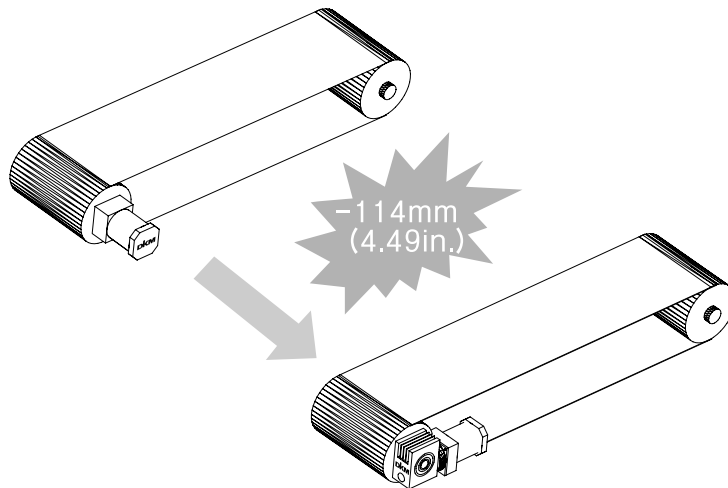
About the specification and permissible torque, please refer to each motor' s specification page.

WORM GEARHEAD

Worm gearhead using worm gear can be used in the space limited application. They allow the motor to be Installed at the right or left axis of equipment such as conveyor belts. Worm Solid WD TYPE and Worm Hollow WHD TYPE are available.

■ Feature

GEARHEAD output shaft is at the right angle with motor output shaft. So it allow the motor to be installed at the right angle with load side. In the maximum use of space, it is very effective.



Note) The combination of INDUCTION MOTOR 90W and GEARHEAD 30:1

## Introduction of Model

Type		Motor Watt	Model	Gear ratio
Worm Type	Solid	25W ~ 60W	<b>8/9WD□BL</b>	<b>10, 12, 15, 18, 25, 30, 36, 50, 60</b>
			<b>8/9WD□BR</b>	
	Hollow	60W ~ 200W	<b>9WHD□</b>	<b>7.5, 10, 15, 20, 25, 30, 40, 50, 60</b>

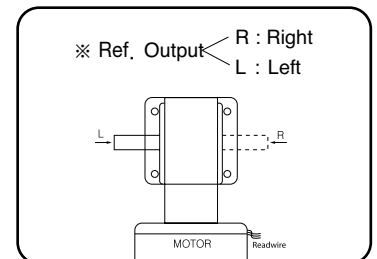
Note) If the frame size and pinion specification of motors is same with that of gearhead, they can be mounted.

## Efficiency of Gearhead

Model \ Ratio	10	12	15	18	20	25	30	36	40	50	60
<b>8WD□BL(R)</b>	60%										
<b>9WD□BL(R)</b>	60%										
<b>9WHD□</b>	60%						55%				

\* Enter the gear ratio in the box(□) within the model name.

## Permissible Torque of Worm Solid Type



### 60Hz

Model	speed RPM (r/min)	180	150	120	100	72	60	50	36	30	
Motor / Gearhead	Gear Ratio	<b>10</b>	<b>12</b>	<b>15</b>	<b>18</b>	<b>25</b>	<b>30</b>	<b>36</b>	<b>50</b>	<b>60</b>	
<b>8*DG* - 15FW</b>	<b>8WD□BL</b>	kgf cm	6	7	10	12	16	18	20	24	27
	<b>8WD□BR</b>	N.m	0.6	0.7	1.0	1.2	1.6	1.8	2.0	2.4	2.7
		lb-in	5.3	6.2	8.8	10.6	14.1	16	18	21	24
<b>8*DG* - 25FW</b>	<b>9WD□BL</b>	kgf cm	11	12	15	17	21	23	25	29	32
	<b>9WD□BR</b>	N.m	1.1	1.2	1.5	1.7	2.1	2.3	2.5	2.9	3.2
		lb-in	9.7	10.6	13.2	15.0	18.5	20	22	26	28
<b>8*DG* - 40FW</b>	<b>9WD□BL</b>	kgf cm	17	20	24	27	34	37	41	47	51
	<b>9WD□BR</b>	N.m	1.7	2.0	2.4	2.7	3.4	3.7	4	5	5
		lb-in	15	18	21	24	30	33	36	42	45
<b>8*DG* - 60FW</b>	<b>9WD□BL</b>	kgf cm	25	30	35	40	49	55	60	60	60
	<b>9WD□BR</b>	N.m	2.5	3.0	3.5	4.0	4.9	5.5	6	6	6
		lb-in	22	27	31	35	43	49	53	53	53

### 50Hz

Model	speed RPM (r/min)	150	125	100	83	60	50	42	30	25	
Motor / Gearhead	Gear Ratio	<b>10</b>	<b>12</b>	<b>15</b>	<b>18</b>	<b>25</b>	<b>30</b>	<b>36</b>	<b>50</b>	<b>60</b>	
<b>8*DG* - 15FW</b>	<b>8WD□BL</b>	kgf cm	7.2	8.4	12.0	14.4	19.2	21.6	24.0	28.8	32.4
	<b>8WD□BR</b>	N.m	0.7	0.8	1.2	1.4	1.9	2.2	2.4	2.9	3.2
		lb-in	6.4	7.4	10.6	12.7	17.0	19	21	25	29
<b>8*DG* - 25FW</b>	<b>9WD□BL</b>	kgf cm	13	14	18	20	25	28	30	35	38
	<b>9WD□BR</b>	N.m	1.3	1.4	1.8	2.0	2.5	2.8	3.0	3.5	3.8
		lb-in	11.7	12.7	15.9	18.0	22.3	24	26	31	34
<b>8*DG* - 40FW</b>	<b>9WD□BL</b>	kgf cm	20	24	29	32	41	44	49	56	60
	<b>9WD□BR</b>	N.m	2.0	2.4	2.9	3.2	4.1	4	5	6	6
		lb-in	18	21	25	29	36	39	43	50	53
<b>8*DG* - 60FW</b>	<b>9WD□BL</b>	kgf cm	30	36	42	48	59	60	60	60	60
	<b>9WD□BR</b>	N.m	3.0	3.6	4.2	4.8	5.9	6	6	6	6
		lb-in	27	32	37	42	52	53	53	53	53

\* Enter the gear ratio in the box(□) within the model name.

## Dimension

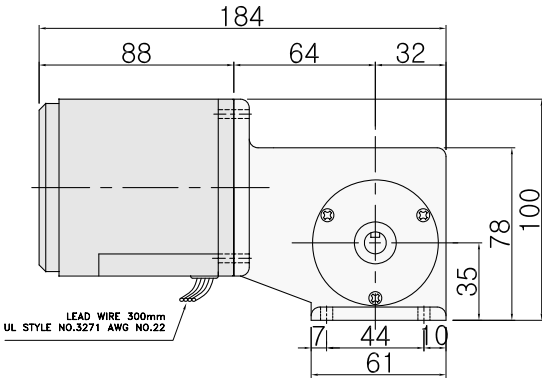
### 1. Wormgeared Induction Motor / 15W

● LEAD WIRE TYPE

◆ GEARED MOTOR

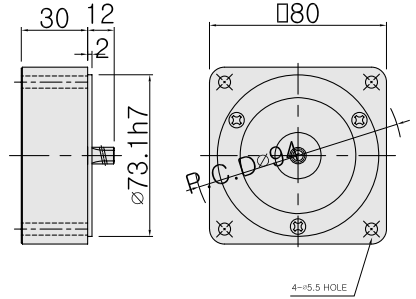
\* MOTOR MODEL : 8IDG□-15W

\* HEAD MODEL : 8WD10BR(L) - 8WD60BR(L)



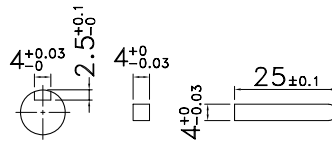
◆ INTER-DECIMAL GEARHEAD

\* MODEL : 8XD10MW



◆ WEIGHT

PART	WEIGHT(Kg)
MOTOR	1.6
DECIMAL GEARHEAD	0.44
GEARHEAD	0.67

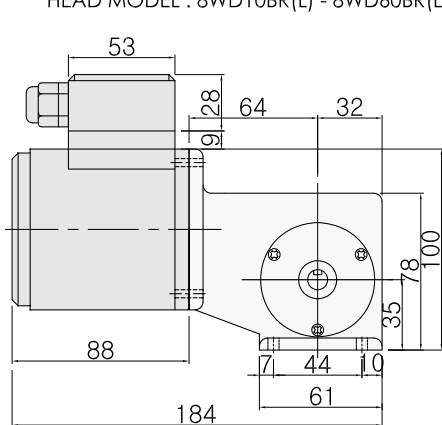


● TERMINAL BOX TYPE

◆ GEARED MOTOR

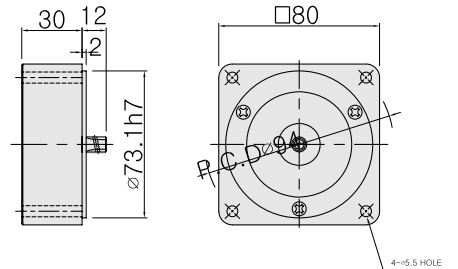
\* MOTOR MODEL : 8IDG□-15W-T

\* HEAD MODEL : 8WD10BR(L) - 8WD60BR(L)



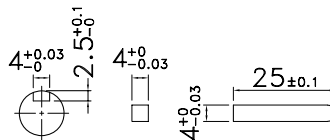
◆ INTER-DECIMAL GEARHEAD

\* MODEL : 8XD10MW



◆ WEIGHT

PART	WEIGHT(Kg)
MOTOR	1.6
DECIMAL GEARHEAD	0.44
GEARHEAD	0.67



## 2. Wormgeared Induction Motor / 25W

- LEAD WIRE TYPE

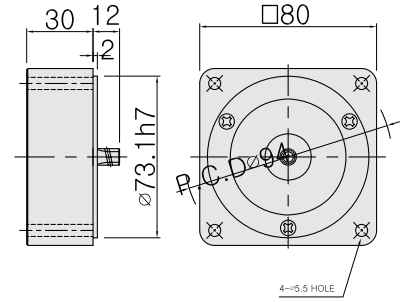
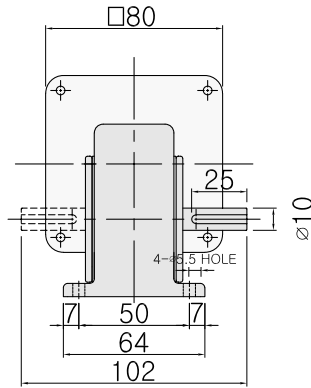
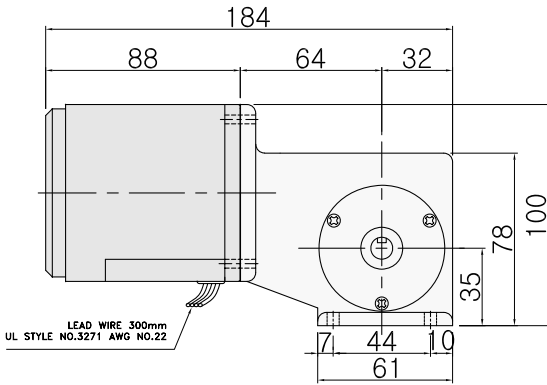
- ◆ GEARED MOTOR

\* MOTOR MODEL : 8IDG□-25W

\* HEAD MODEL : 8WD10BR(L) - 8WD60BR(L)

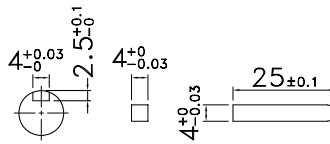
- ◆ INTER-DECIMAL GEARHEAD

\* MODEL : 8XD10MW



- ◆ WEIGHT

PART	WEIGHT(Kg)
MOTOR	1.6
DECIMAL GEARHEAD	0.44
GEARHEAD	0.67



- TERMINAL BOX TYPE

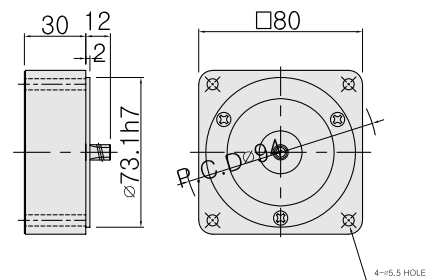
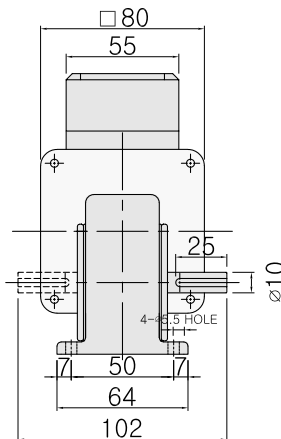
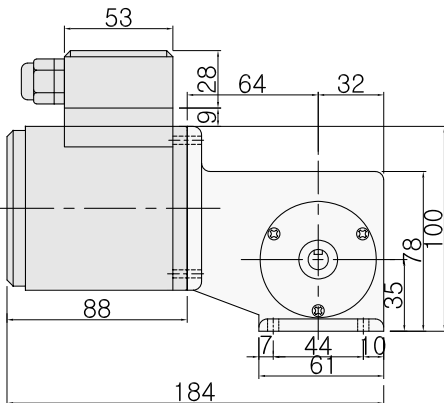
- ◆ GEARED MOTOR

\* MOTOR MODEL : 8IDG□-25W-T

\* HEAD MODEL : 8WD10BR(L) - 8WD60BR(L)

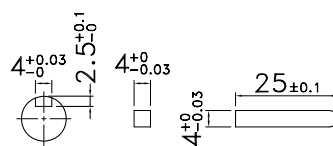
- ◆ INTER-DECIMAL GEARHEAD

\* MODEL : 8XD10MW



- ◆ WEIGHT

PART	WEIGHT(Kg)
MOTOR	1.6
DECIMAL GEARHEAD	0.44
GEARHEAD	0.67

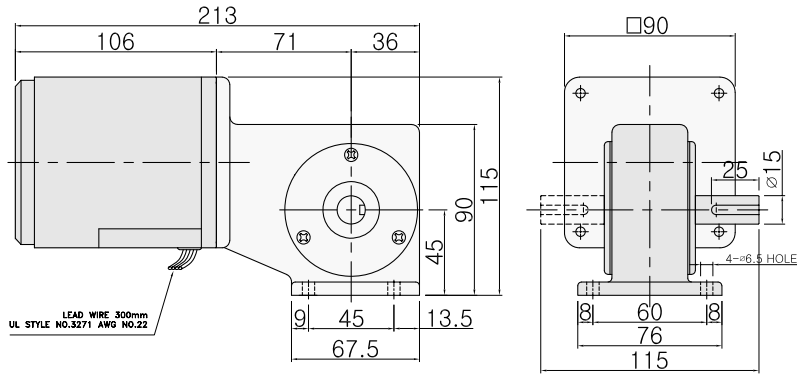


### 3. Wormgeared Induction Motor / 40W

● LEAD WIRE TYPE

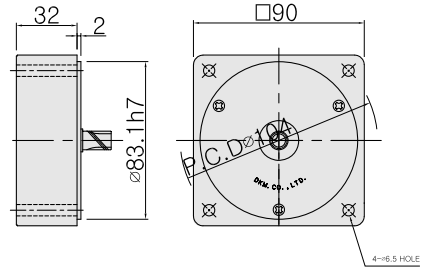
◆ GEARED MOTOR

- \* MOTOR MODEL : 9IDG□-40FW
- \* HEAD MODEL : 9WD10BR(L) - 9WD60BR(L)



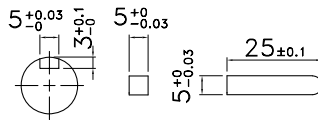
◆ INTER-DECIMAL GEARHEAD

- \* MODEL : 9XD10MW



◆ WEIGHT

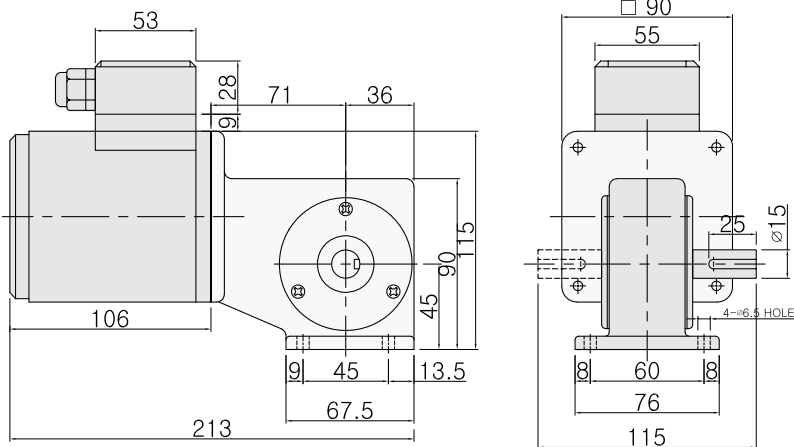
PART	WEIGHT(Kg)
MOTOR	2.4
DECIMAL GEARHEAD	0.5
GEARHEAD	1.0



● TERMINAL BOX TYPE

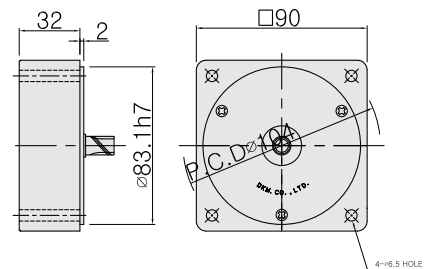
◆ GEARED MOTOR

- \* MOTOR MODEL : 9IDG□-40FW-T
- \* HEAD MODEL : 9WD10BR(L) - 9WD60BR(L)



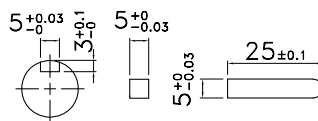
◆ INTER-DECIMAL GEARHEAD

- \* MODEL : 9XD10MW



◆ WEIGHT

PART	WEIGHT(Kg)
MOTOR	2.4
DECIMAL GEARHEAD	0.5
GEARHEAD	1.0

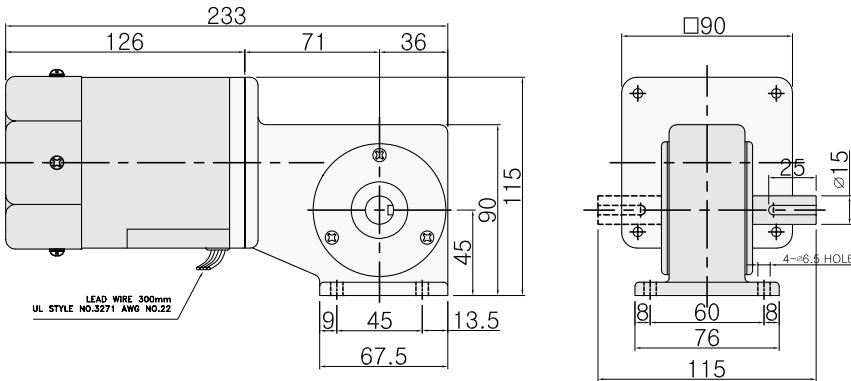


## 4. Wormgeared Induction Motor / 60W

### ● LEAD WIRE TYPE

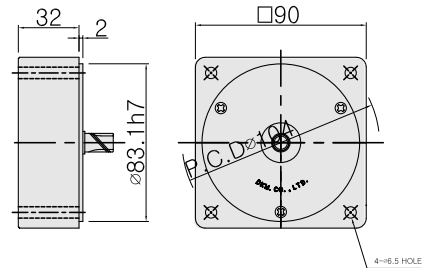
#### ◆ GEARED MOTOR

- \* MOTOR MODEL : 9IDG□-60FW
- \* HEAD MODEL : 9WD10BR(L) - 9WD60BR(L)



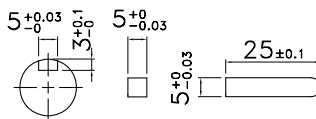
#### ◆ INTER-DECIMAL GEARHEAD

- \* MODEL : 9XD10MW



#### ◆ WEIGHT

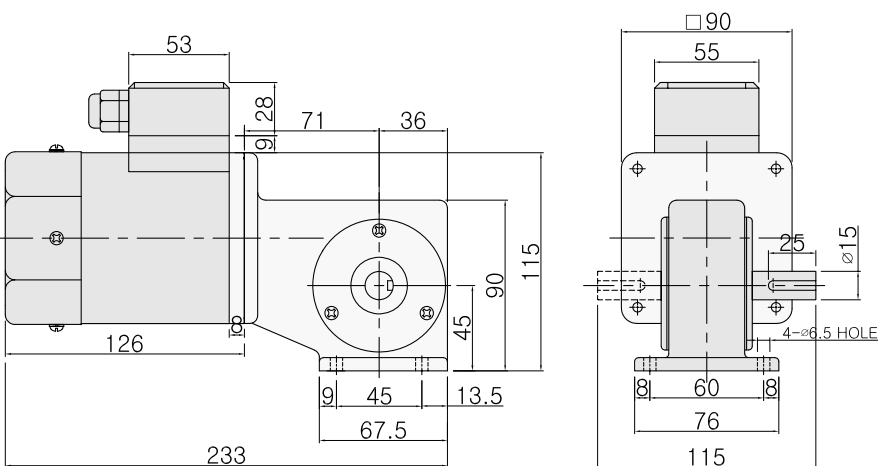
PART	WEIGHT(Kg)
MOTOR	2.6
DECIMAL GEARHEAD	0.5
GEARHEAD	1.0



### ● TERMINAL BOX TYPE

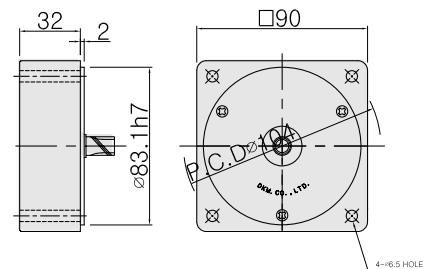
#### ◆ GEARED MOTOR

- \* MOTOR MODEL : 9IDG□-60FW-T
- \* HEAD MODEL : 9WD10BR(L) - 9WD60BR(L)



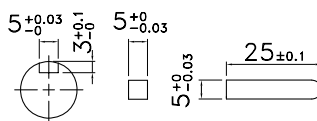
#### ◆ INTER-DECIMAL GEARHEAD

- \* MODEL : 9XD10MW



#### ◆ WEIGHT

PART	WEIGHT(Kg)
MOTOR	2.6
DECIMAL GEARHEAD	0.5
GEARHEAD	1.0



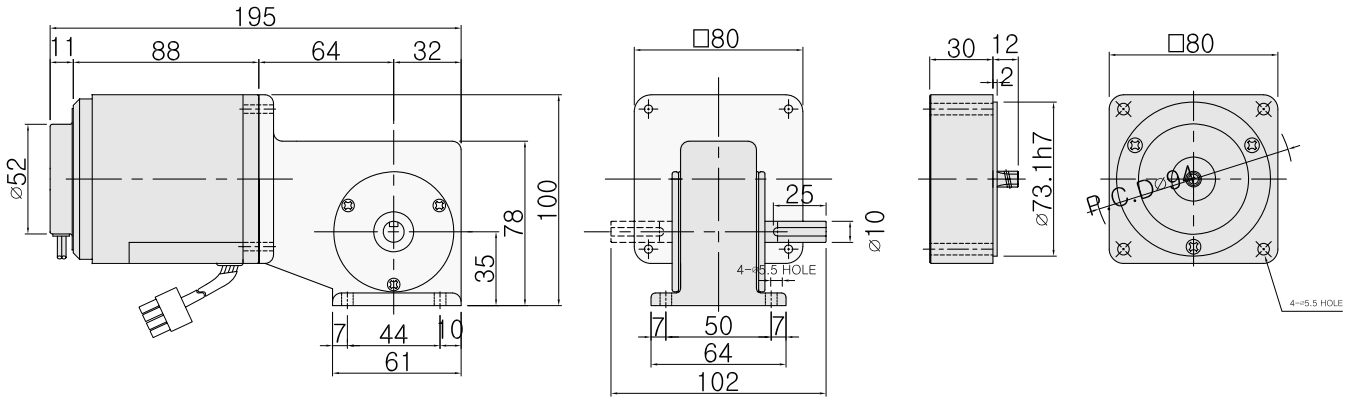
### 5. Wormgeared Speed Control Motor / 15W

◆ GEARED MOTOR

- \* MOTOR MODEL : 8SDG□-15W
- \* HEAD MODEL : 8WD10BR(L) - 8WD60BR(L)

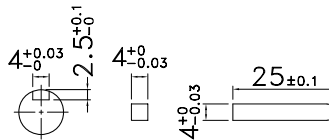
◆ INTER-DECIMAL GEARHEAD

- \* MODEL : 8XD10MW



◆ WEIGHT

PART	WEIGHT(Kg)
MOTOR	1.7
DECIMAL GEARHEAD	0.44
GEARHEAD	0.67



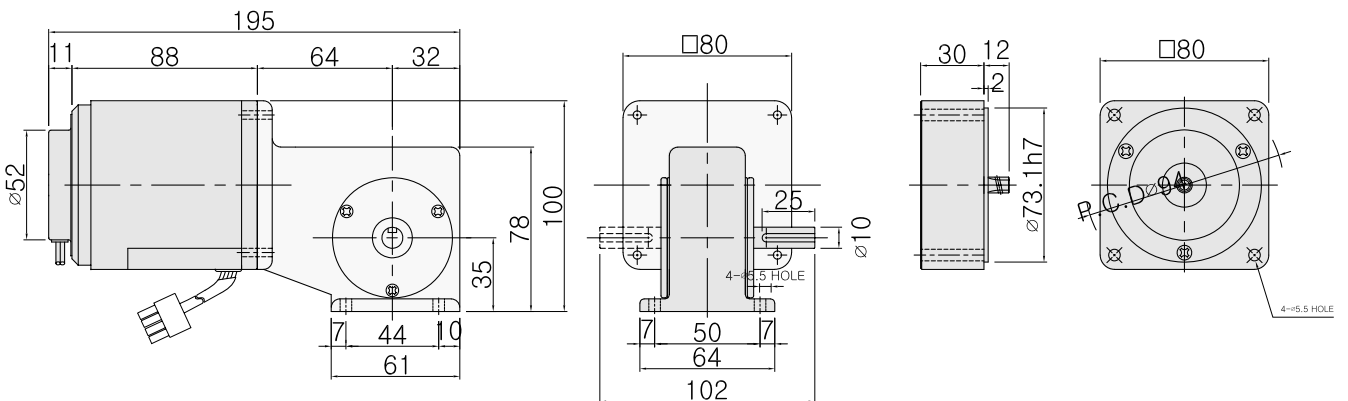
### 6. Wormgeared Speed Control Motor / 25W

◆ GEARED MOTOR

- \* MOTOR MODEL : 8SDG□-25W
- \* HEAD MODEL : 8WD10BR(L) - 8WD60BR(L)

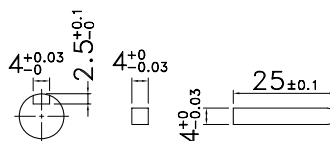
◆ INTER-DECIMAL GEARHEAD

- \* MODEL : 8XD10MW



◆ WEIGHT

PART	WEIGHT(Kg)
MOTOR	1.7
DECIMAL GEARHEAD	0.44
GEARHEAD	0.67

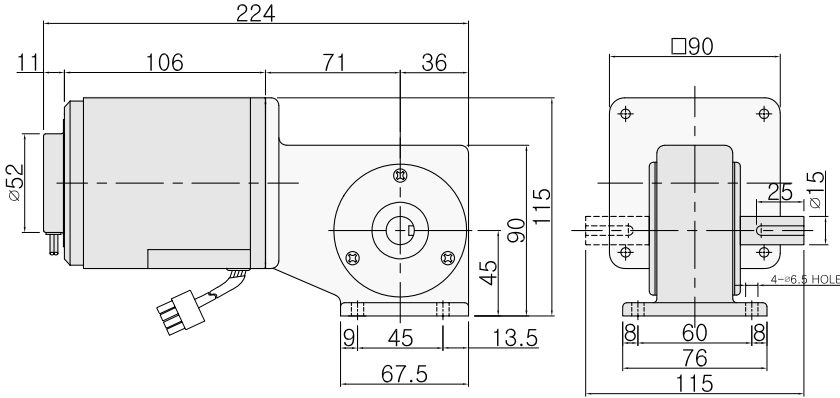




## 7. Wormgeared Speed Control Motor / 40W

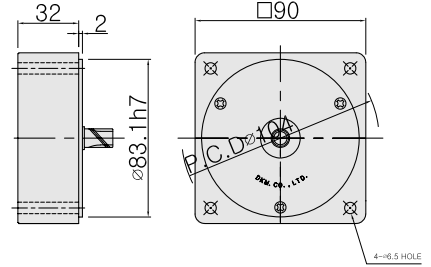
### ◆ GEARED MOTOR

- \* MOTOR MODEL : 9SDG□-40FW
- \* HEAD MODEL : 9WD10BR(L) - 9WD60BR(L)



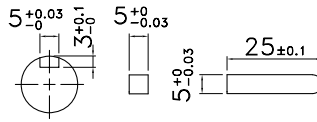
### ◆ INTER-DECIMAL GEARHEAD

- \* MODEL : 9XD10MW



### ◆ WEIGHT

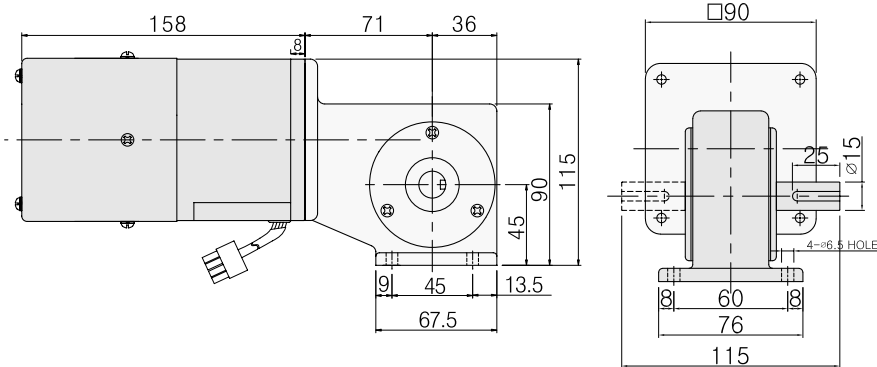
PART	WEIGHT(Kg)
MOTOR	2.5
DECIMAL GEARHEAD	0.5
GEARHEAD	1.0



## 8. Wormgeared Speed Control Motor / 60W

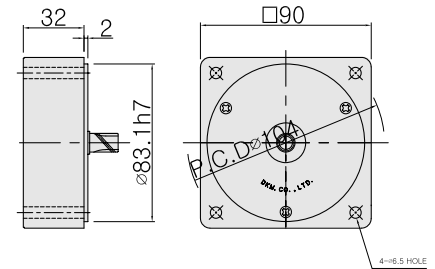
### ◆ GEARED MOTOR

- \* MOTOR MODEL : 9SDG□-60F2W
- \* HEAD MODEL : 9WD10BR(L) - 9WD60BR(L)



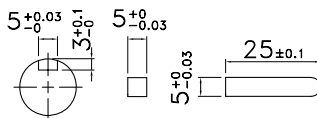
### ◆ INTER-DECIMAL GEARHEAD

- \* MODEL : 9XD10MW

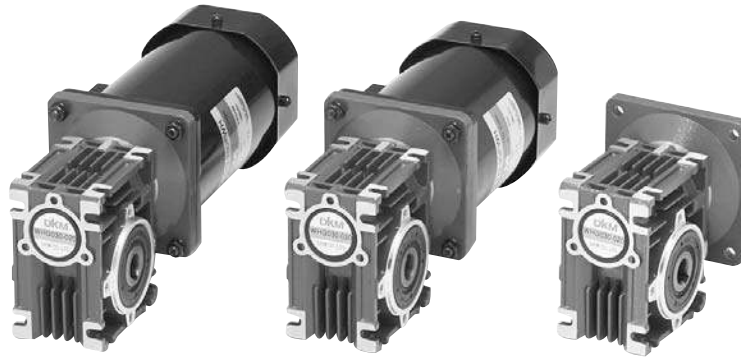


### ◆ WEIGHT

PART	WEIGHT(Kg)
MOTOR	2.7
DECIMAL GEARHEAD	0.5
GEARHEAD	1.0



■ Permissible Torque of Worm Hollow Type



60Hz

Model	speed RPM (r/min)	240	180	120	90	72	60	45	36	30	22
Motor / Gearhead	Gear Ratio	7.5	10	15	20	25	30	40	50	60	80
<b>9*DG*-60FWH</b> / <b>9WHD</b> □	kgf cm	15	20	29	39	49	54	72	90	107	120
	N.m	1.5	2.0	2.9	3.9	4.9	5.4	7.2	9.0	10.7	12.0
	lb-in	13.2	17.6	25.5	34.3	43	48	63	79	94	106
<b>9*DG*-90FWH</b> / <b>9WHD</b> □	kgf cm	22	29	44	59	73	80	107	133	160	180
	N.m	2.2	2.6	4.4	5.9	7.3	8.0	10.7	13.3	16.0	18.0
	lb-in	19.4	25.5	38.7	51.9	64.2	70	94	117	141	158
<b>9*DG*-120FWH</b> / <b>9WHD</b> □	kgf cm	29	39	59	78	97	107	143	179	214	240
	N.m	2.9	3.9	5.9	7.8	9.7	10.7	14.3	17.9	21.4	24.0
	lb-in	41	41	62	74	103	123	148	205	246	211
<b>9*DG*-150FWH</b> / <b>9WHD</b> □	kgf cm	37	49	73	97	121	133	178	223	267	300
	N.m	3.7	4.9	7.3	9.7	12.1	13.3	17.8	22.3	26.7	30.0
	lb-in	33	43	64	85	106	117	157	196	235	264
<b>9*DG*-180FWH</b> / <b>9WHD</b> □	kgf cm	44	58	88	117	146	161	214	268	321	360
	N.m	4.4	5.8	8.8	11.7	14.6	16.1	21.4	26.8	32.1	36.0
	lb-in	39	51	77	103	128	142	188	236	282	317
<b>9*DG*-200FWH</b> / <b>9WHD</b> □	kgf cm	49	65	98	129	162	178	238	297	357	380
	N.m	4.9	6.5	9.8	12.9	16.2	17.8	23.8	29.7	35.7	38.0
	lb-in	43	57	86	114	143	157	209	261	314	334

50Hz

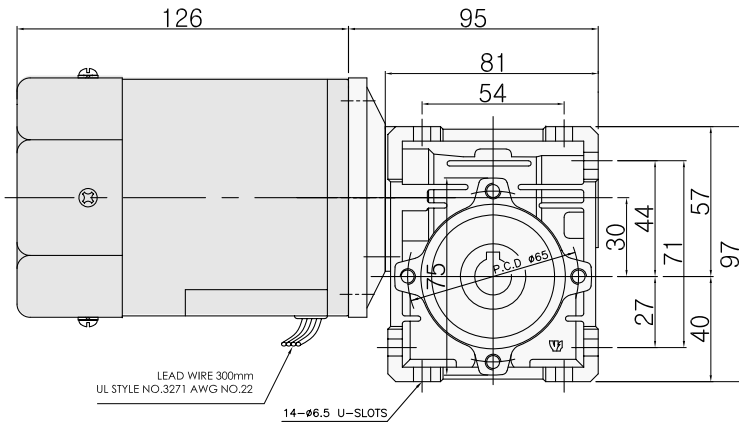
Model	speed RPM (r/min)	200	150	100	75	60	50	38	30	25	18
Motor / Gearhead	Gear Ratio	7.5	10	15	20	25	30	40	50	60	80
<b>9*DG*-60FWH</b> / <b>9WHD</b> □	kgf cm	18	23	35	47	58	64	85	107	128	144
	N.m	1.8	2.3	3.5	4.7	5.8	6.4	8.5	10.7	12.8	14.4
	lb-in	15.8	20.2	30.8	41.4	51	56	75	94	113	126.7
<b>9*DG*-90FWH</b> / <b>9WHD</b> □	kgf cm	26	35	52	70	88	96	128	160	192	216
	N.m	2.6	3.5	5.2	7.0	8.8	9.6	12.8	16.0	19.2	21.6
	lb-in	22.9	30.8	45.8	61.6	77.4	84	113	141	169	190
<b>9*DG*-120FWH</b> / <b>9WHD</b> □	kgf cm	35	47	70	93	117	128	171	214	257	288
	N.m	3.5	4.7	7.0	9.3	11.7	12.8	17.1	21.4	25.7	28.8
	lb-in	41	41	62	74	103	123	148	205	246	253
<b>9*DG*-150FWH</b> / <b>9WHD</b> □	kgf cm	44	58	88	117	146	160	214	267	321	360
	N.m	4.4	5.8	8.8	11.7	14.6	16.0	21.4	26.7	32.1	36.0
	lb-in	39	51	77	103	128	141	188	235	282	317
<b>9*DG*-180FWH</b> / <b>9WHD</b> □	kgf cm	53	70	105	140	175	193	257	321	385	432
	N.m	5.3	7.0	10.5	14.0	17.5	19.3	25.7	32.1	38.5	43.2
	lb-in	47	62	92	123	154	170	226	282	339	380
<b>9*DG*-200FWH</b> / <b>9WHD</b> □	kgf cm	58	78	117	156	195	214	286	357	428	456
	N.m	5.8	7.8	11.7	15.6	19.5	21.4	28.6	35.7	42.8	45.6
	lb-in	51	69	103	137	172	188	252	314	377	401

\* Enter the gear ratio in the box(□) within the model name.

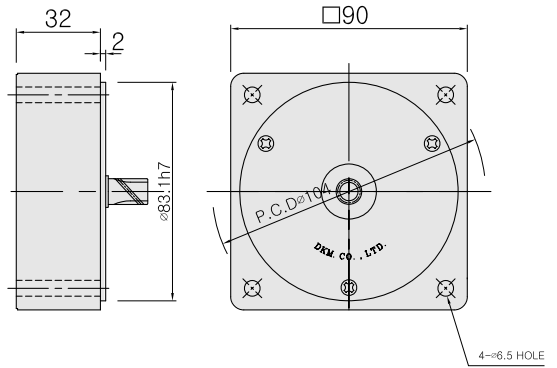
## Dimension

### 1. 60W

- ◆ Induction Motor With Worm Hollow Gearhead
- \* MODEL : 9IDG□-60FWH

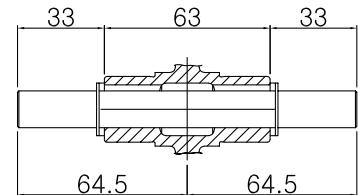
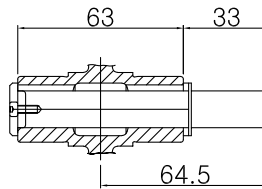
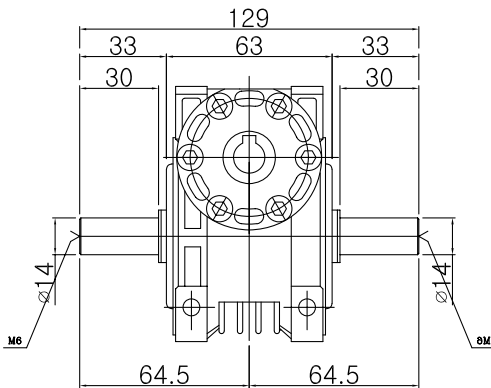
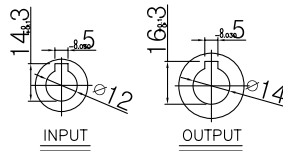


- ◆ INTER-DECIMAL GEARHEAD
- \* MODEL : 9XD10MWH

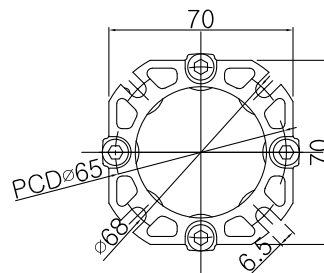
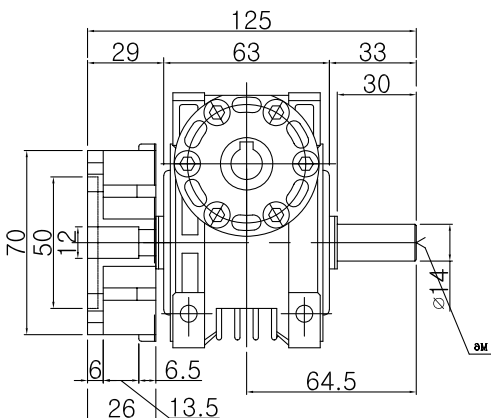


### ◆ WEIGHT

PART	WEIGHT(Kg)
MOTOR	2.6
DECIMAL GEARHEAD	0.5
GEARHEAD	1.130

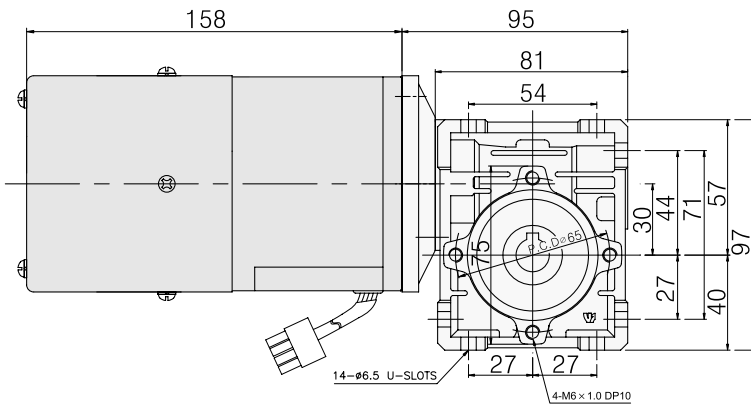


### ◆ FLANGE



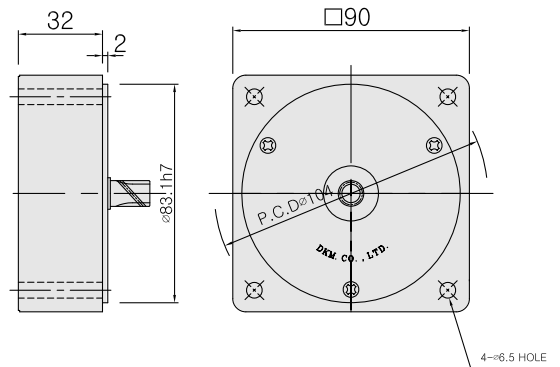
◆ Speed Control Motor With Worm Hollow Gearhead

\* MODEL : 9SDG□-60F2WH



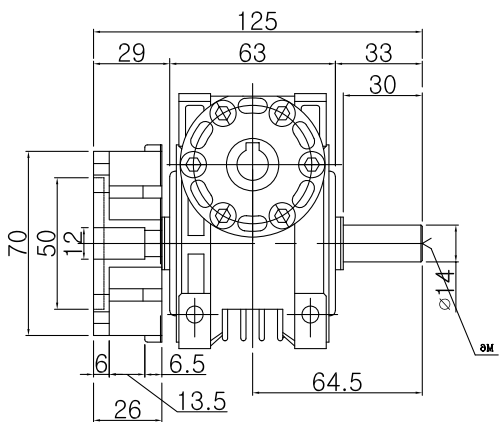
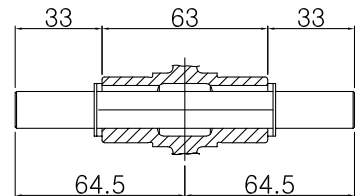
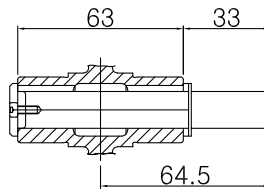
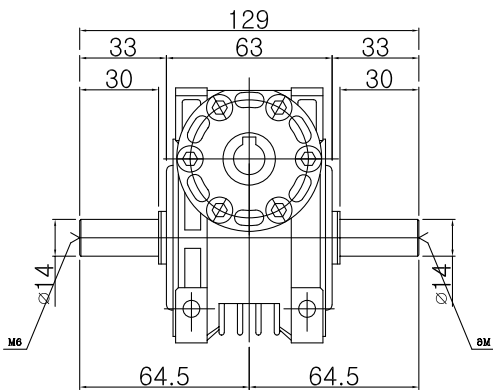
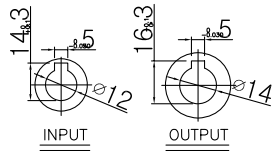
◆ INTER-DECIMAL GEARHEAD

\* MODEL : 9XD10MWH

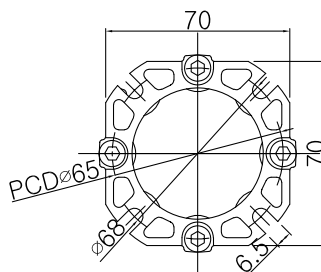


◆ WEIGHT

PART	WEIGHT(Kg)
MOTOR	2.7
DECIMAL GEARHEAD	0.5
GEARHEAD	1.130



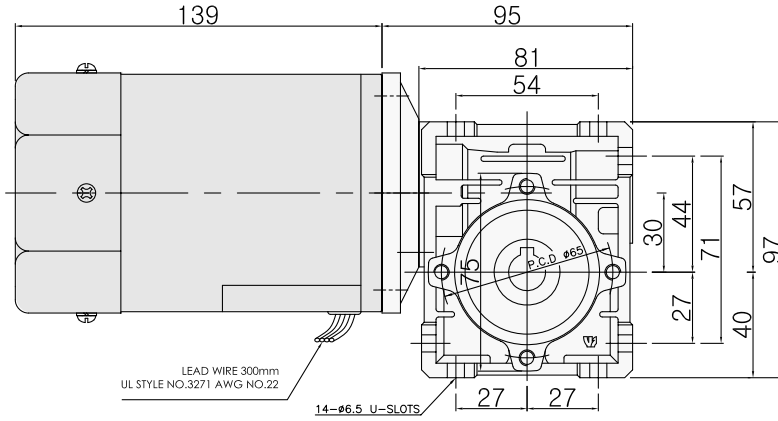
◆ FLANGE



## 2. 90W

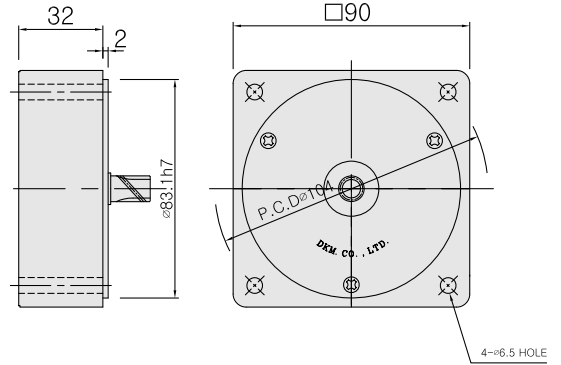
### ◆ Induction Motor With Worm Hollow Gearhead

\* MODEL : 9IDG□-90FWH



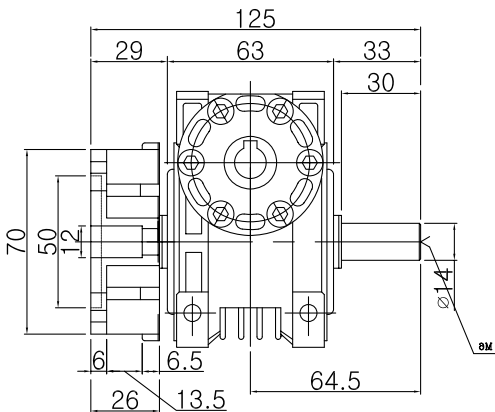
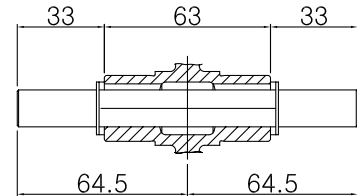
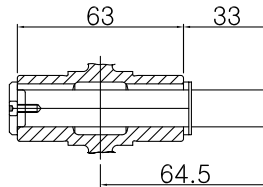
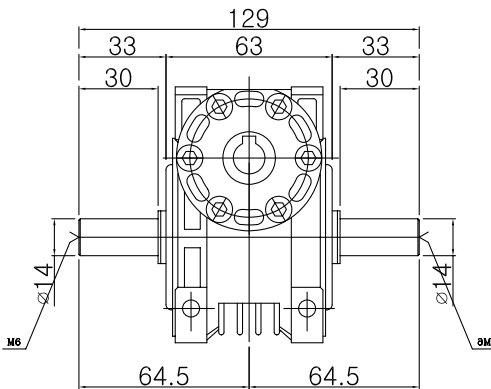
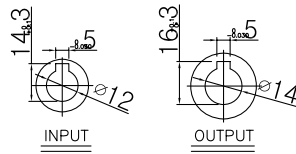
### ◆ INTER-DECIMAL GEARHEAD

\* MODEL : 9XD10MWH

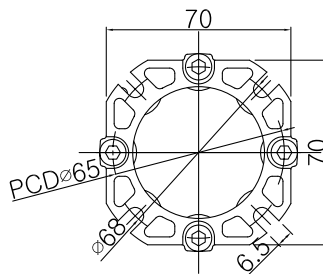


### ◆ WEIGHT

PART	WEIGHT(Kg)
MOTOR	3.0
DECIMAL GEARHEAD	0.5
GEARHEAD	1.130

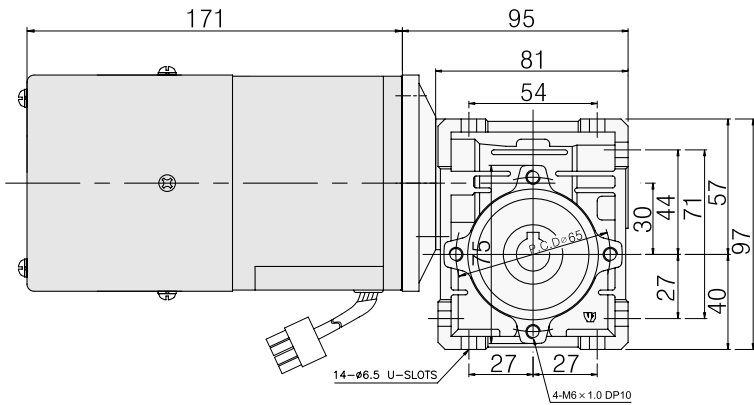


### ◆ FLANGE



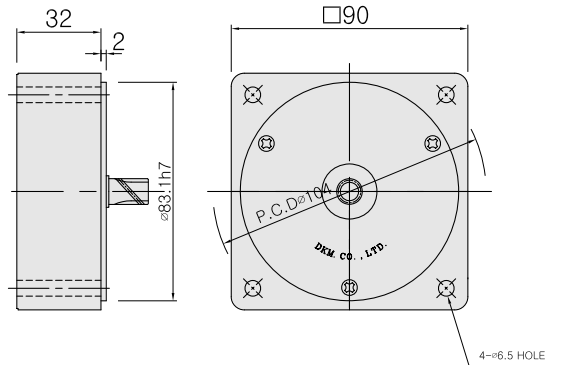
◆ Speed Control Motor With Worm Hollow Gearhead

\* MODEL : 9SDG□-90F2WH



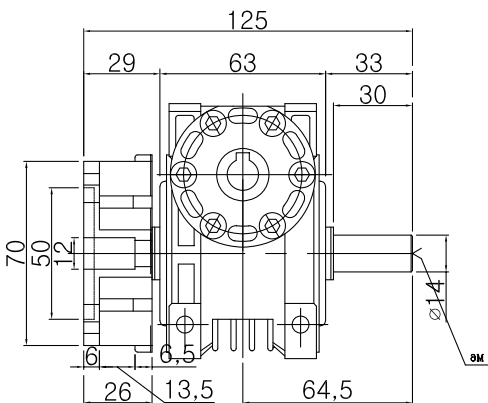
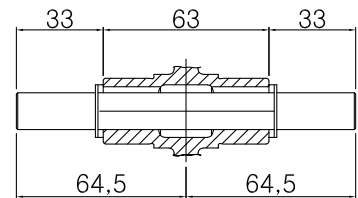
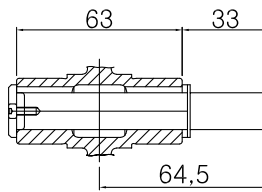
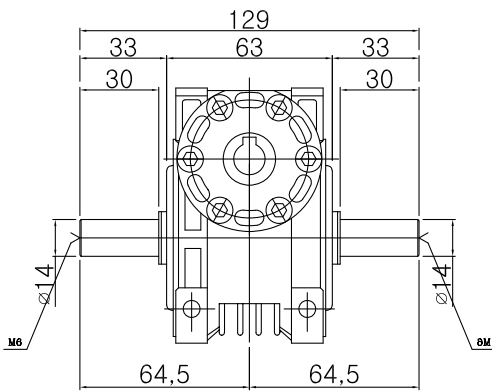
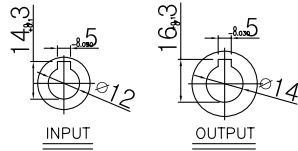
◆ INTER-DECIMAL GEARHEAD

\* MODEL : 9XD10MWH

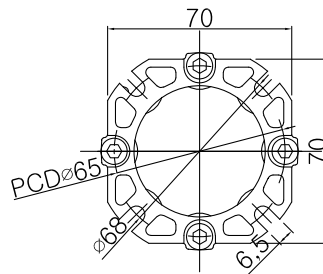


◆ WEIGHT

PART	WEIGHT(Kg)
MOTOR	3.0
DECIMAL GEARHEAD	0.5
GEARHEAD	1.130



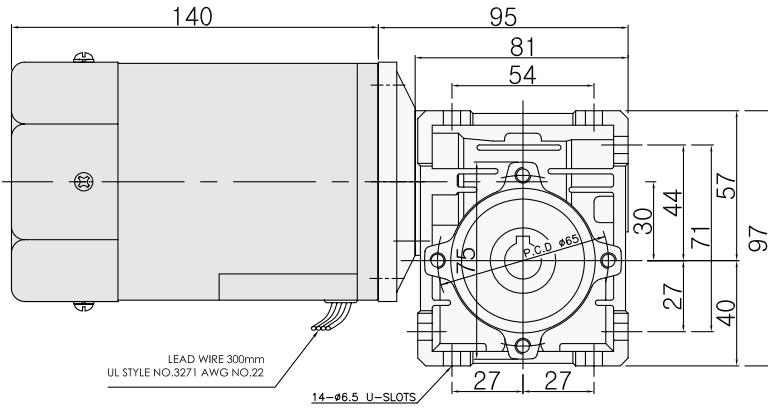
◆ FLANGE



### 3. 120W

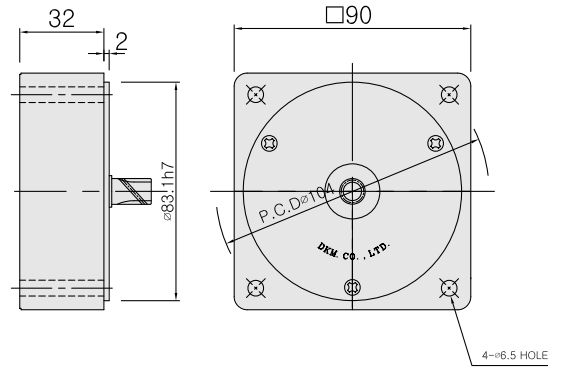
◆ Induction Motor With Worm Hollow Gearhead

\* MODEL : 9IDG□-120FWH



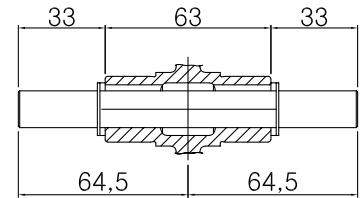
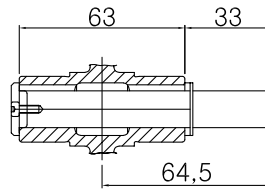
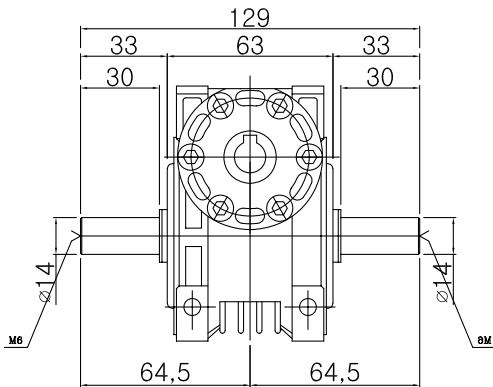
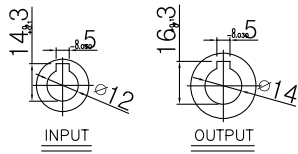
◆ INTER-DECIMAL GEARHEAD

\* MODEL : 9XD10MWH

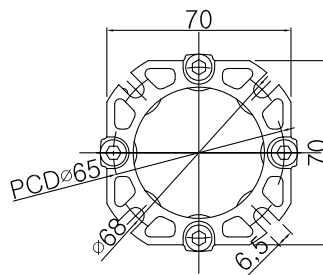
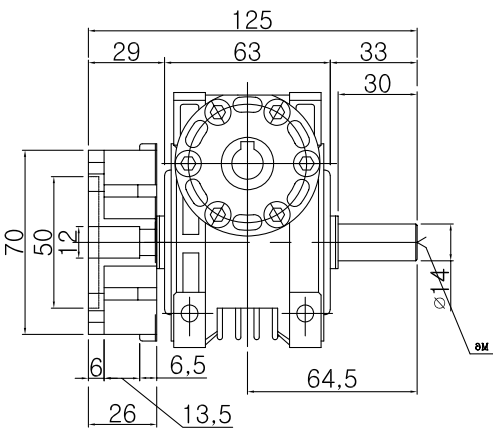


◆ WEIGHT

PART	WEIGHT(Kg)
MOTOR	3.0
DECIMAL GEARHEAD	0.5
GEARHEAD	1.130

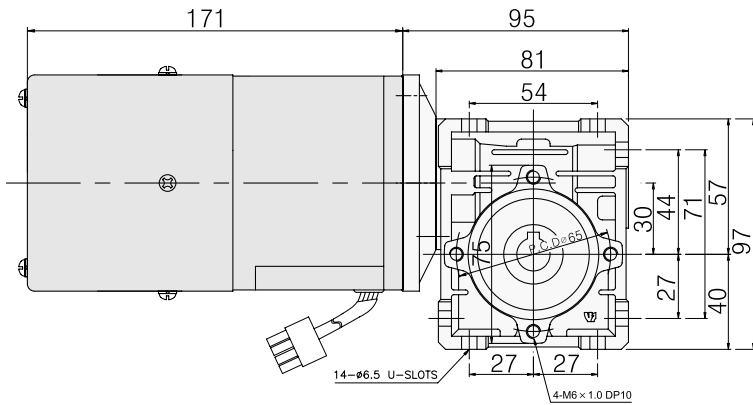


◆ FLANGE



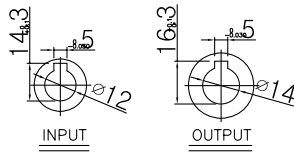
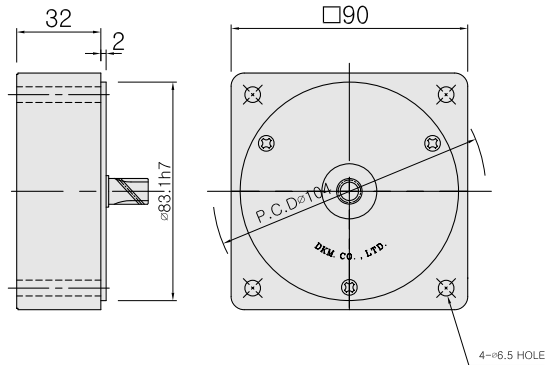
◆ Speed Control Motor With Worm Hollow Gearhead

\* MODEL : 9SDG□-120F2WH



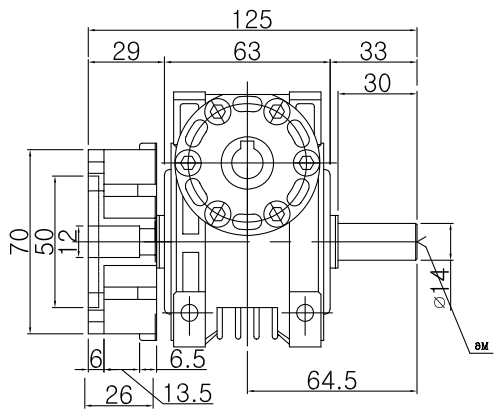
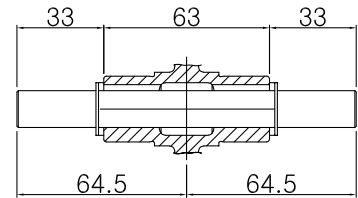
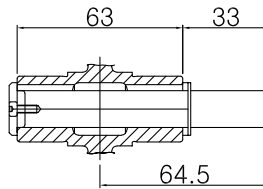
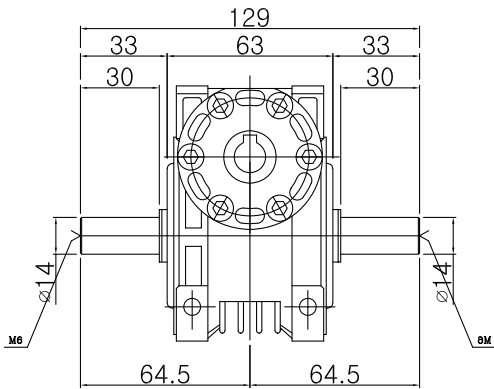
◆ INTER-DECIMAL GEARHEAD

\* MODEL : 9XD10MWH

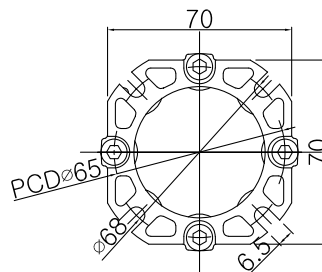


◆ WEIGHT

PART	WEIGHT(Kg)
MOTOR	2.7
DECIMAL GEARHEAD	0.5
GEARHEAD	1.130



◆ FLANGE

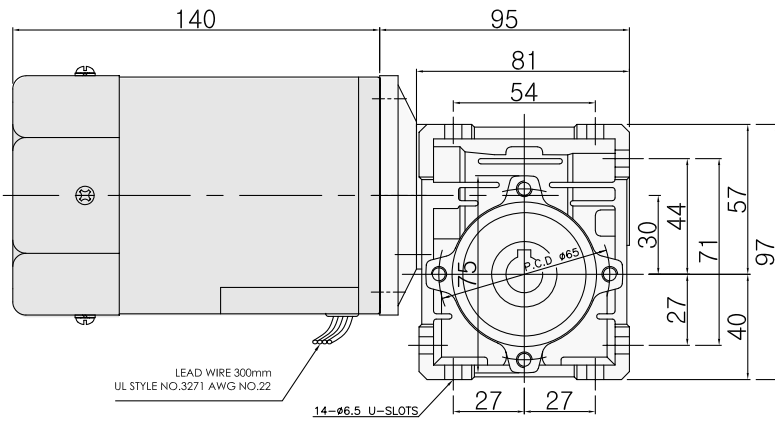




#### 4. 150W

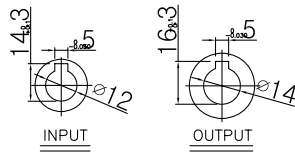
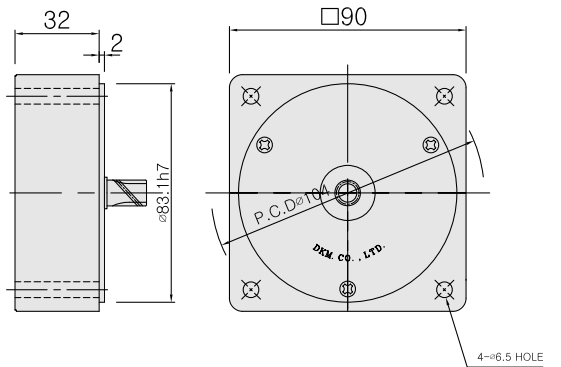
◆ Induction Motor With Worm Hollow Gearhead

\* MODEL : 9IDG□-150FWH



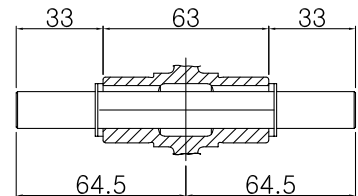
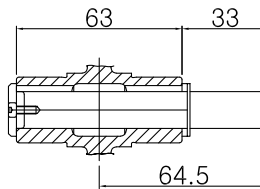
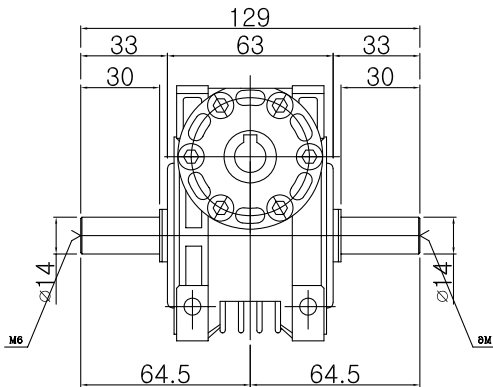
◆ INTER-DECIMAL GEARHEAD

\* MODEL : 9XD10MWH

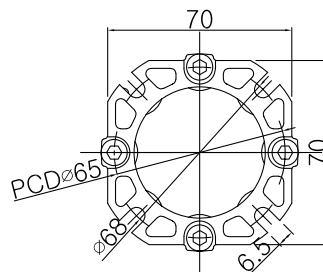
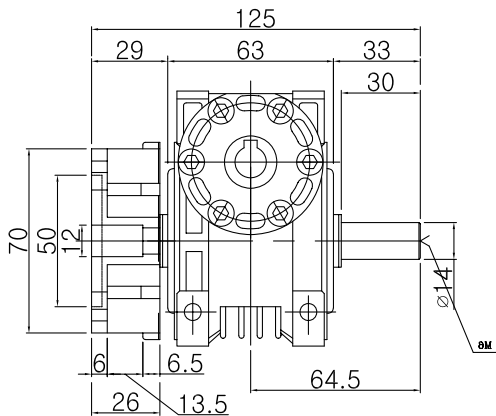


◆ WEIGHT

PART	WEIGHT(Kg)
MOTOR	3.0
DECIMAL GEARHEAD	0.5
GEARHEAD	1.130



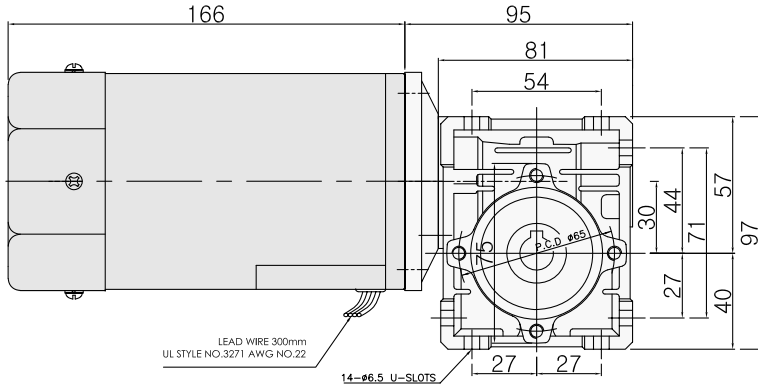
◆ FLANGE



5. 180W

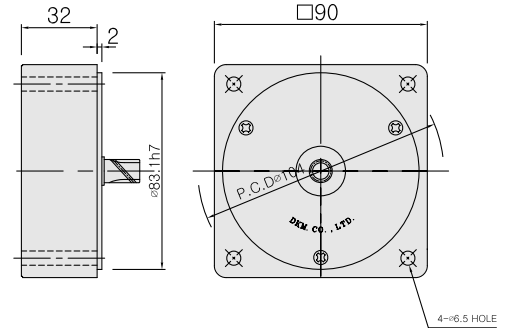
◆ Induction Motor With Worm Hollow Gearhead

\* MODEL : 9IDG□-180FWH



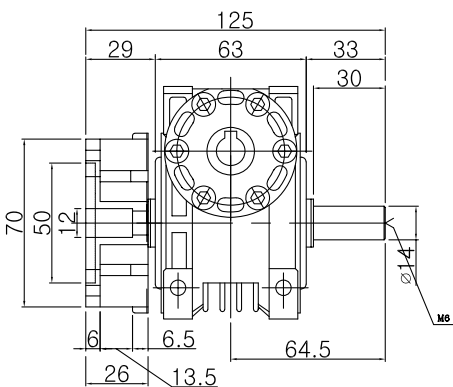
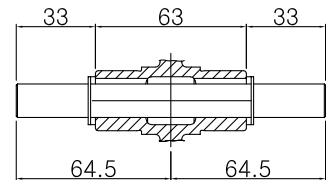
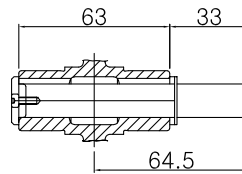
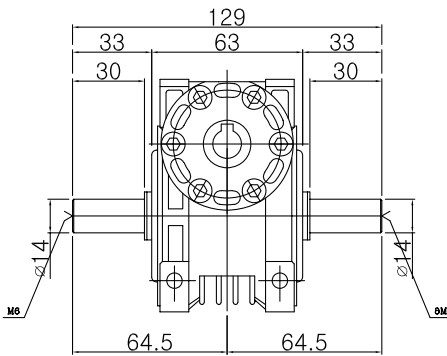
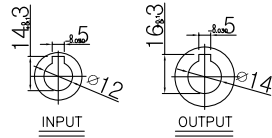
◆ INTER-DECIMAL GEARHEAD

\* MODEL : 9XD10MWH

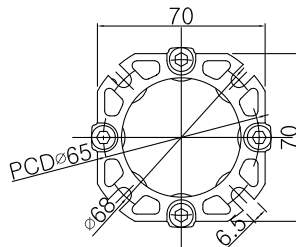


◆ WEIGHT

PART	WEIGHT(Kg)
MOTOR	3.8
DECIMAL GEARHEAD	0.5
GEARHEAD	1.130

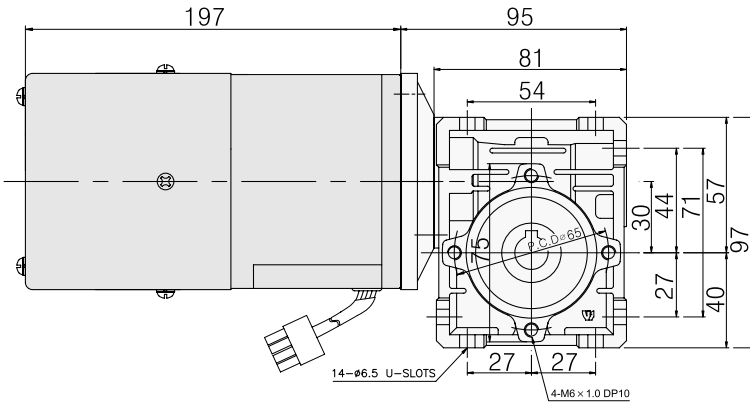


◆ FLANGE



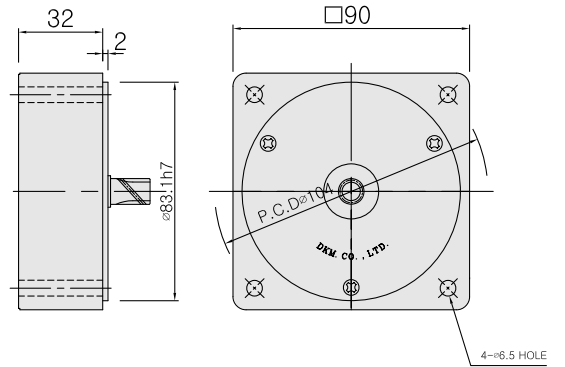
◆ Speed Control Motor With Worm Hollow Gearhead

\* MODEL : 9SDG□-180F2WH



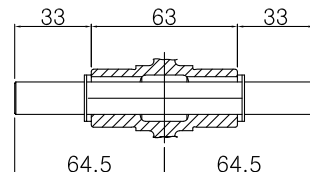
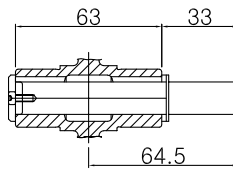
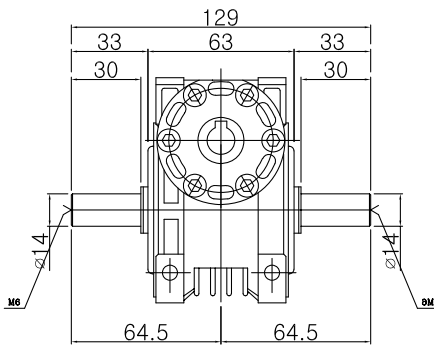
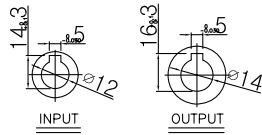
◆ INTER-DECIMAL GEARHEAD

\* MODEL : 9XD10MWH

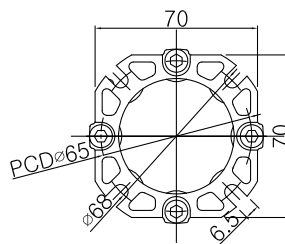
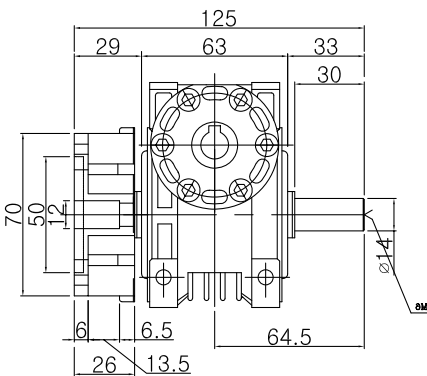


◆ WEIGHT

PART	WEIGHT(Kg)
MOTOR	3.9
DECIMAL GEARHEAD	0.5
GEARHEAD	1.130



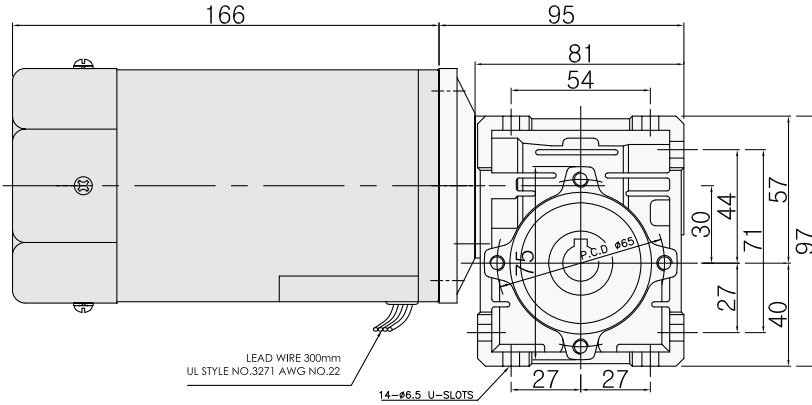
◆ FLANGE



6. 200W

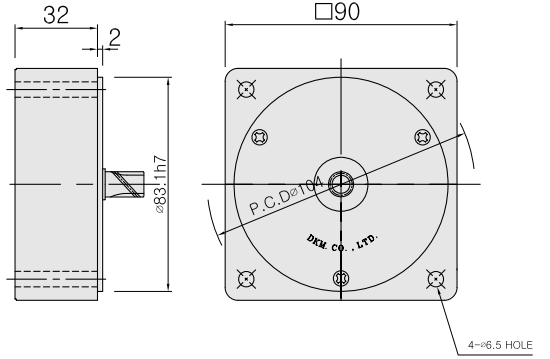
◆ Induction Motor With Worm Hollow Gearhead

\* MODEL : 9IDG□-200FWH



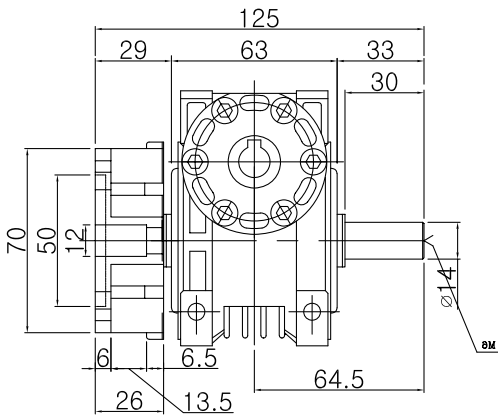
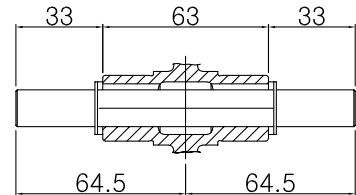
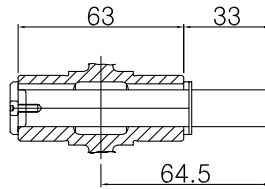
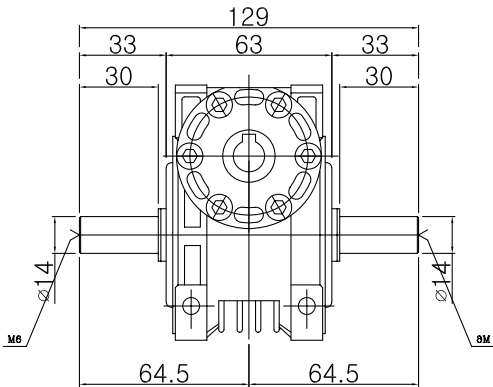
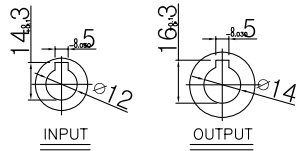
◆ INTER-DECIMAL GEARHEAD

\* MODEL : 9XD10MWH



◆ WEIGHT

PART	WEIGHT(Kg)
MOTOR	3.8
DECIMAL GEARHEAD	0.5
GEARHEAD	1.130



◆ FLANGE

